

# GRADY COUNTY

## 2020 Overview



### BROADBAND

**Broadband Issue Work Group**  
Archway Partnership

### COMMUNITY AND ECONOMIC DEVELOPMENT

**Birdsong Barn Re-Purpose Design**  
College of Environment & Design, Lamar Dodd School of Art

**Cairo-Grady County Joint Development Authority Engineered Site Plan**  
College of Engineering

**City of Cairo Tourism Bed Tax Study**  
Terry College of Business

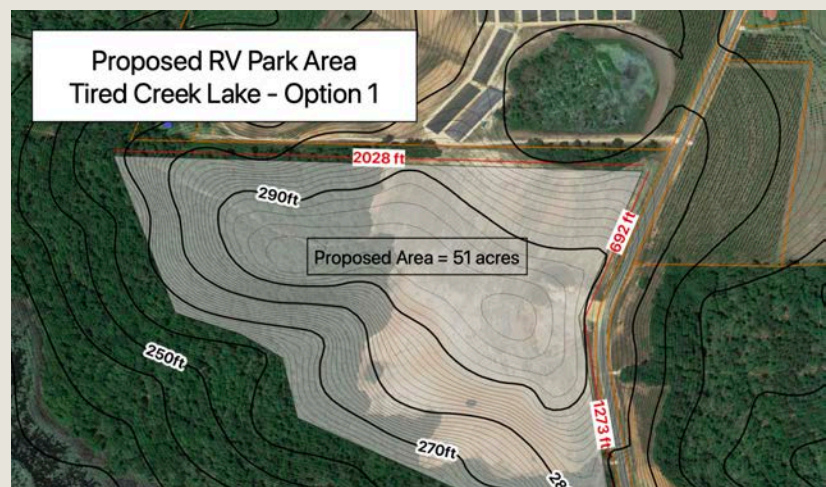
**Governmental Financial Management and Planning Training**  
Carl Vinson Institute of Government

**Grady County Fire Department Maps**  
Franklin College of Arts & Sciences Geography Department

**Grady County RV Park Mapping and Site Plan**  
College of Engineering, Franklin College of Arts & Sciences Geography Department

**Tourism Issue Work Group**  
Archway Partnership

**UGA Research - Housing Options Post-Natural Disasters**  
College of Family & Consumer Sciences



**Archway Partnership**  
UNIVERSITY OF GEORGIA

[archwaypartnership.uga.edu](http://archwaypartnership.uga.edu)

• [apartner@uga.edu](mailto:apartner@uga.edu)

• (706) 542-1098



# FISCAL YEAR 2020

19

Projects  
Completed

11

Students

7

Faculty  
Members

\$414,903

Return on  
Investment

## COMMUNITY HEALTH AND WELLNESS

County-wide Drone Utilization Survey  
College of Public Health, School of Social Work  
Grady County Emergency Management Agency  
Website  
Grady College of Journalism and Mass Communication

## EDUCATION FOR A QUALITY WORKFORCE

Grady County Schools Cairo High School College and  
Career Academy

Academy Photography  
Archway Partnership  
Jackie Robinson Mural  
Lamar Dodd School of Art  
Marketing Brochure  
Archway Partnership  
Training for Agriculture Students  
State Botanical Garden of Georgia  
Agriculture Pathway Pollinator Garden  
State Botanical Garden of Georgia  
Athens Culinary Tour  
Archway Partnership

Grady County Schools Graduate Guidebook  
Archway Partnership

Counseling and Pathway Development Issue Work  
Group  
Archway Partnership



ARCHWAY PROFESSIONAL  
Whitney Brannen

(229)-702-6016  
whitney.brannen@uga.edu