

HART COUNTY

2020 Overview



QUALITY OF LIFE

- CyberArch: Cyber Security Summit II**
Terry College of Business, CyberArch Task Force
- Poverty Task Force Meetings**
College of Public Health, School of Social Work
- Workplace Health and Wellness Pilot Study**
College of Public Health
- Informational Housing Flyer**
Terry College of Business, School of Public and International Affairs, Lamar Dodd School of Art

PREPARING FOR GROWTH

- FindIt Survey for Georgia Main Street Accreditation**
College of Environment and Design
- Hart County Jail Site Cost Analysis**
School of Public and International Affairs, Terry College of Business
- Hart County Jail Site Feasibility Study**
College of Engineering, School of Public and International Affairs
- Landbank Discussion with Spalding County**

WORKFORCE DEVELOPMENT & EDUCATION

- Leadership In Action: Supporting Rural Students on their Pathways to Postsecondary Education**
College of Education, International Affairs, Lamar Dodd School of Art
- Post-High School Options Conference at HCHS**
College of Education



FISCAL YEAR 2020

18

Projects Completed

17

Students

18

Faculty Members

\$501,281

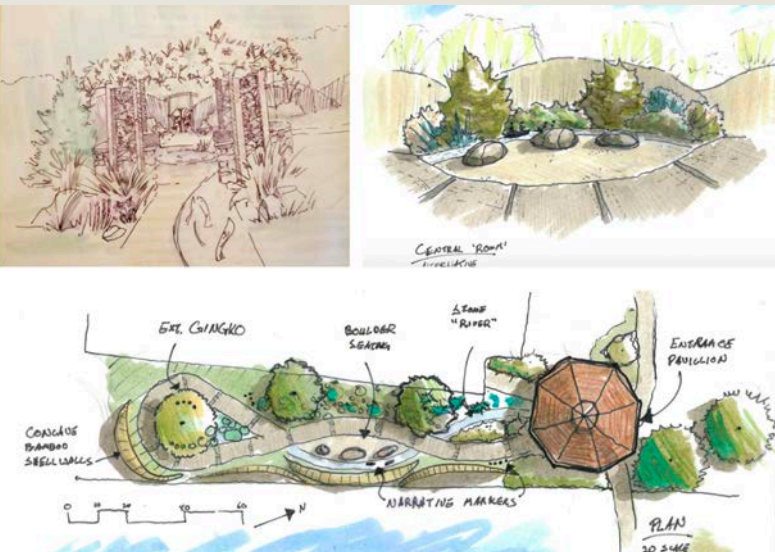
Return on Investment



TOURISM



- Regional Tourism Roundtable I, II, and III
- "Grown/Agriculture Trail in Northeast Georgia Meeting" – Hartwell, Toccoa, and Lavonia
- Blush and Little Japan Murals on Depot Street
Lamar Dodd School of Art
- Entrance Design for Hart County Botanical Garden
College of Environment and Design
- Historic Downtown Hartwell Ambassador Packets
College of Environment and Design, Terry College of Business, Lamar Dodd School of Art
- Tree Suggestions for Depot Street
College of Environment and Design
- UGA U.S. Travel Sentiment Survey During Covid-19
Pandemic Data Analysis
College of Agricultural and Environmental Sciences, Terry College of Business
- Grown/Agriculture Trail in Northeast Georgia Meeting – Hart, Franklin, and Stephens Counties



ARCHWAY PROFESSIONAL
ROSANNA CRUZ-BIBB

706-338-9767
rosannac@uga.edu